

SCADA INSTALLATION AND PROGRAMMING



ASIAPHIL Manufacturing Industries, Inc.

SCADA INSTALLATION AND PROGRAMMING

TO PROVIDE MEANS OF INTEGRATING ELECTRICAL POWER AND ENERGY MEASUREMENTS WITH THE PURPOSE OF CONTROLLING AND MAXIMIZING THE USE OF THEM.

We are offering our CIRCUTOR CIRNET SCADA for an existing substation that has CIRCUTOR meters and/or the likes, network protection relays with or without communication port but has analog outputs. This could minimize the cost of operation; you can just assign a skilled technician for the operation of the whole power system.

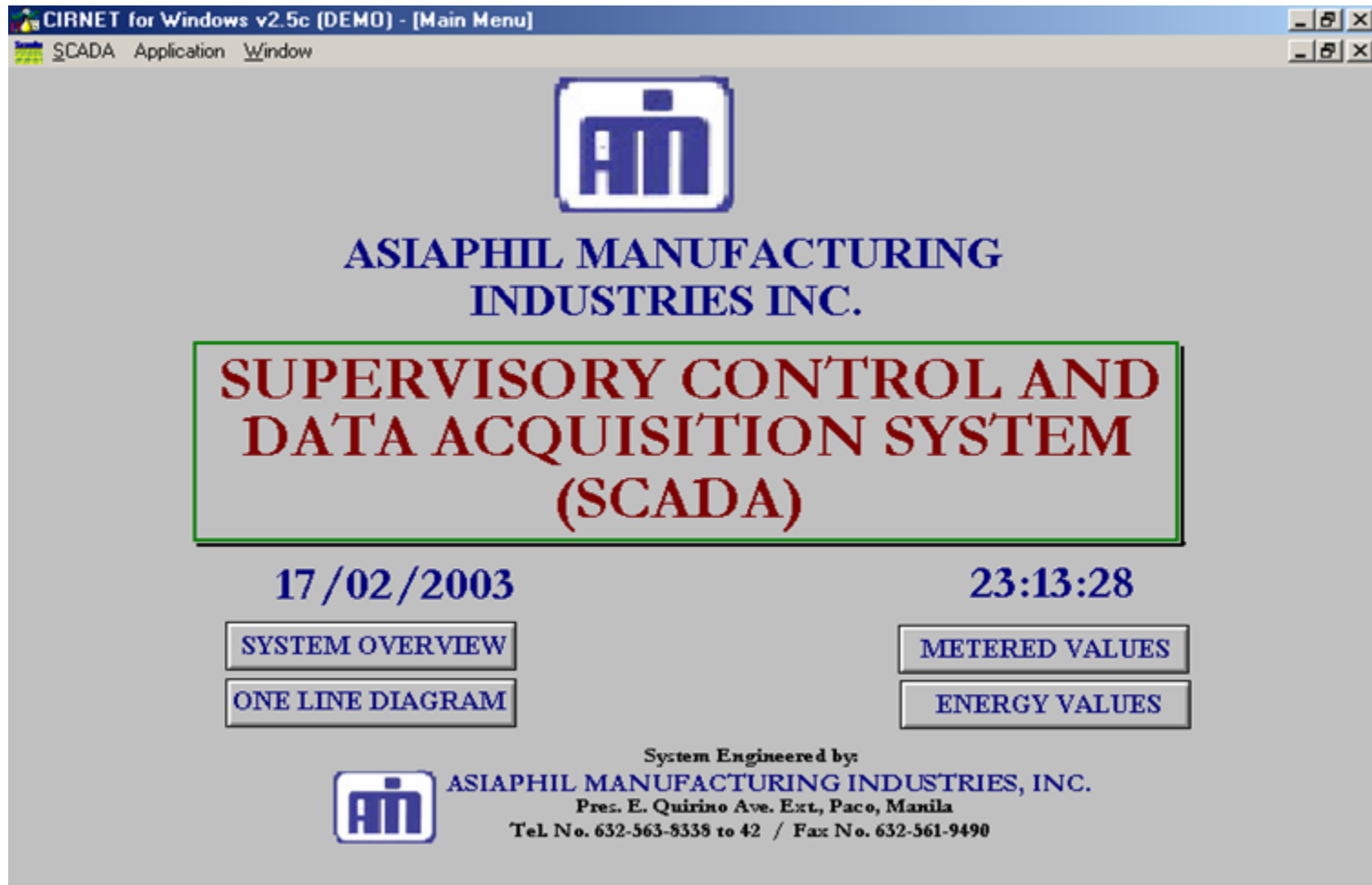
Advantages of SCADA Implementation

- Dynamically displays electrical parameters.
- Animate elements such as lines, bars, switches, etc., in order to graphically display parameters.
- Send parameters and commands to the installation, to close and open switches, to vary control parameters in Managing Systems of Power Demand, and others.
- Record alarms in printer and/or disk.
- Transmits and records advisory messages on screen, printer and/or disk.
- Performs real time graphics.
- Implements flexible operator interfaces.
- Gets graphical or numerical evolution through the time of any of the parameters stored by each instrument (logger).
- Displays the energy measured by each CIRCUTOR instrument or by group of those existing instruments.

SCADA SAMPLE DATA



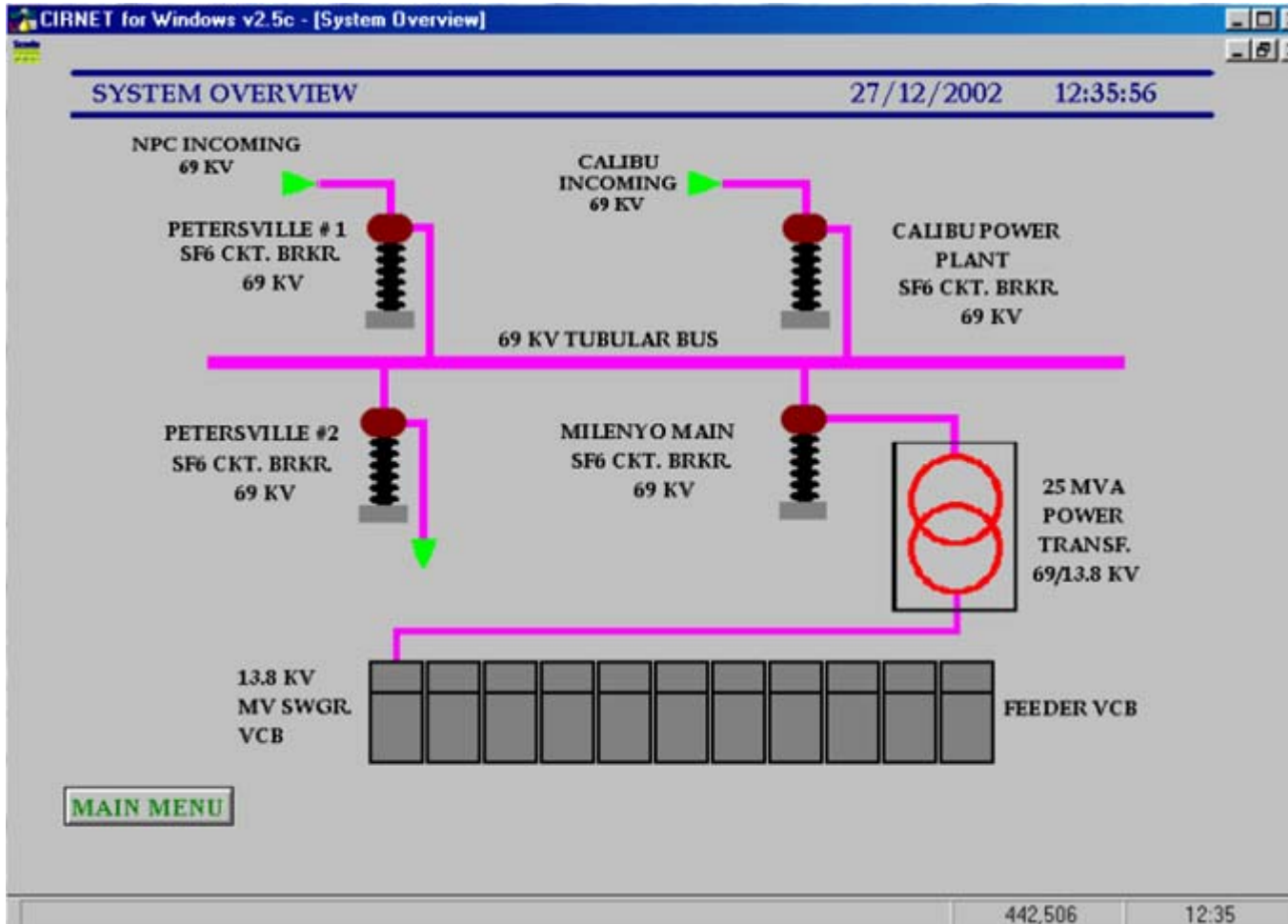
Cover Page



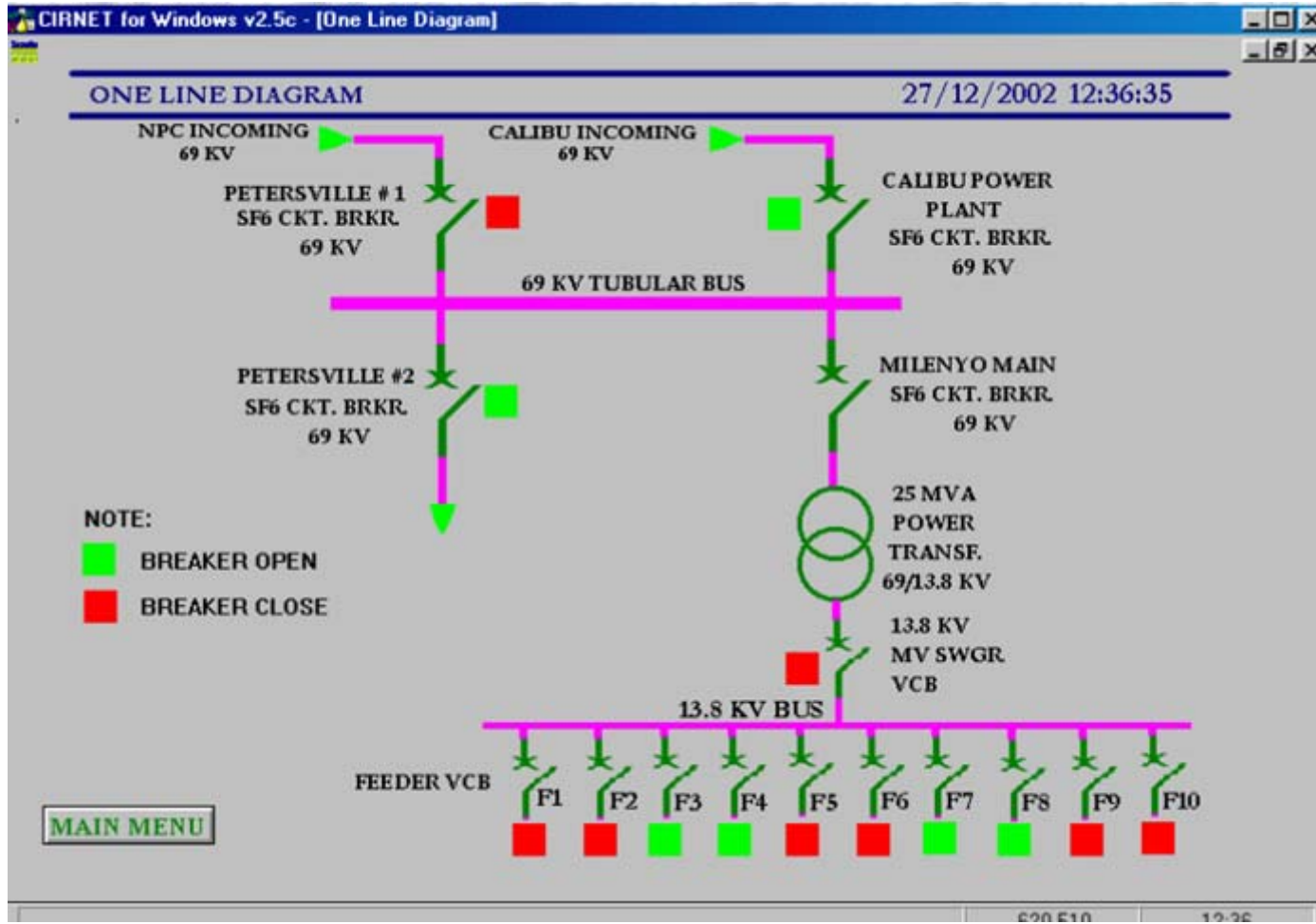
The image shows a screenshot of a Windows application window titled "CIRNET for Windows v2.5c (DEMO) - [Main Menu]". The window contains the following elements:

- Windows title bar: "CIRNET for Windows v2.5c (DEMO) - [Main Menu]"
- Menu bar: "SCADA Application Window"
- Logo: A stylized "AM" logo in a square frame.
- Company Name: "ASIAPHIL MANUFACTURING INDUSTRIES INC." in blue, bold, uppercase letters.
- System Title: "SUPERVISORY CONTROL AND DATA ACQUISITION SYSTEM (SCADA)" in red, bold, uppercase letters, enclosed in a green-bordered box.
- Date: "17/02/2003" in blue, bold text.
- Time: "23:13:28" in blue, bold text.
- Navigation Buttons: Four buttons with blue text on a light gray background:
 - SYSTEM OVERVIEW
 - METERED VALUES
 - ONE LINE DIAGRAM
 - ENERGY VALUES
- Footer: "System Engineered by: ASIAPHIL MANUFACTURING INDUSTRIES, INC." followed by the address "Pres. E. Quirino Ave. Ext, Paco, Manila" and contact numbers "Tel. No. 632-563-8335 to 42 / Fax No. 632-561-9490". A small "AM" logo is also present.

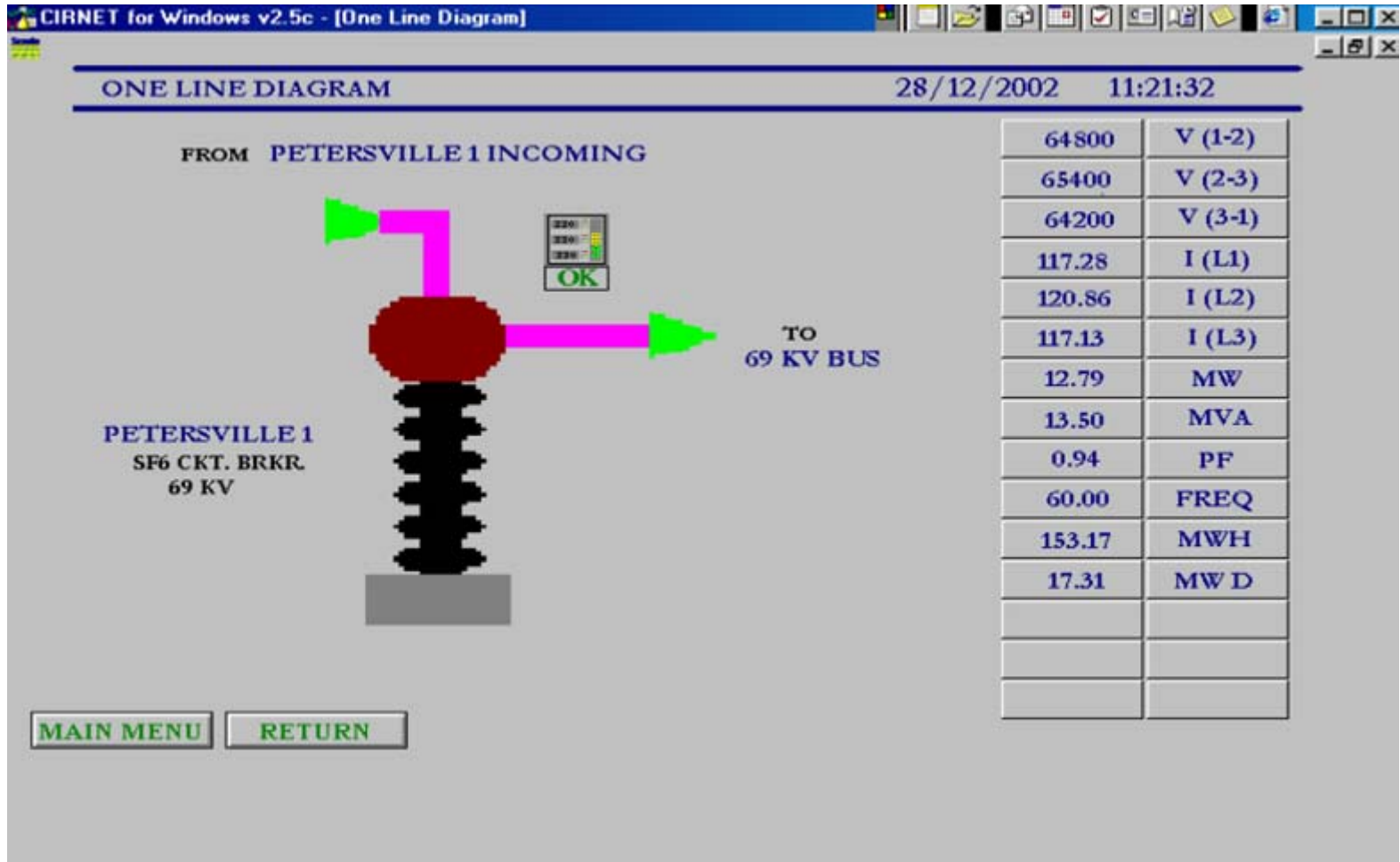
Power System Overview



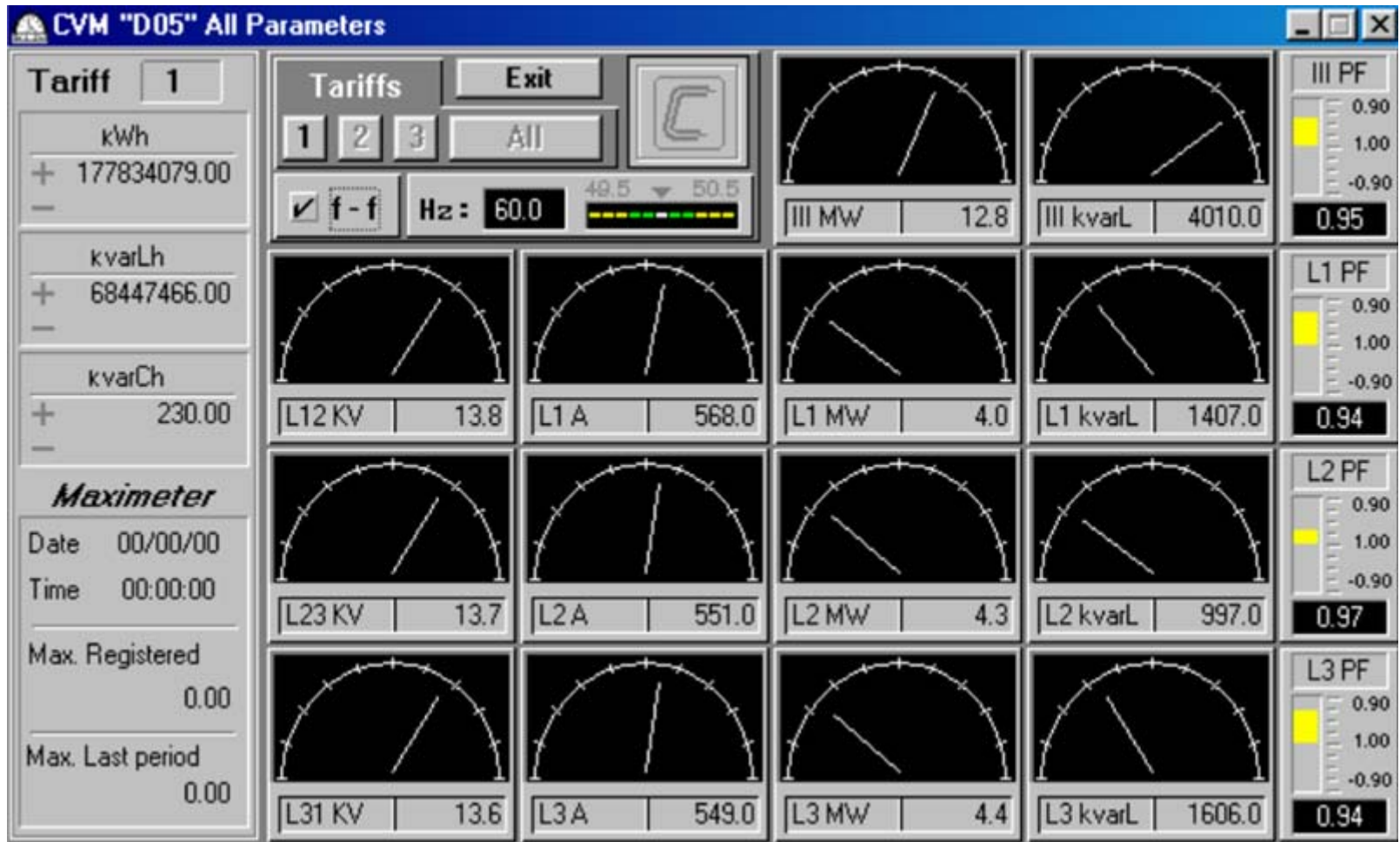
Power System Single Line Diagram



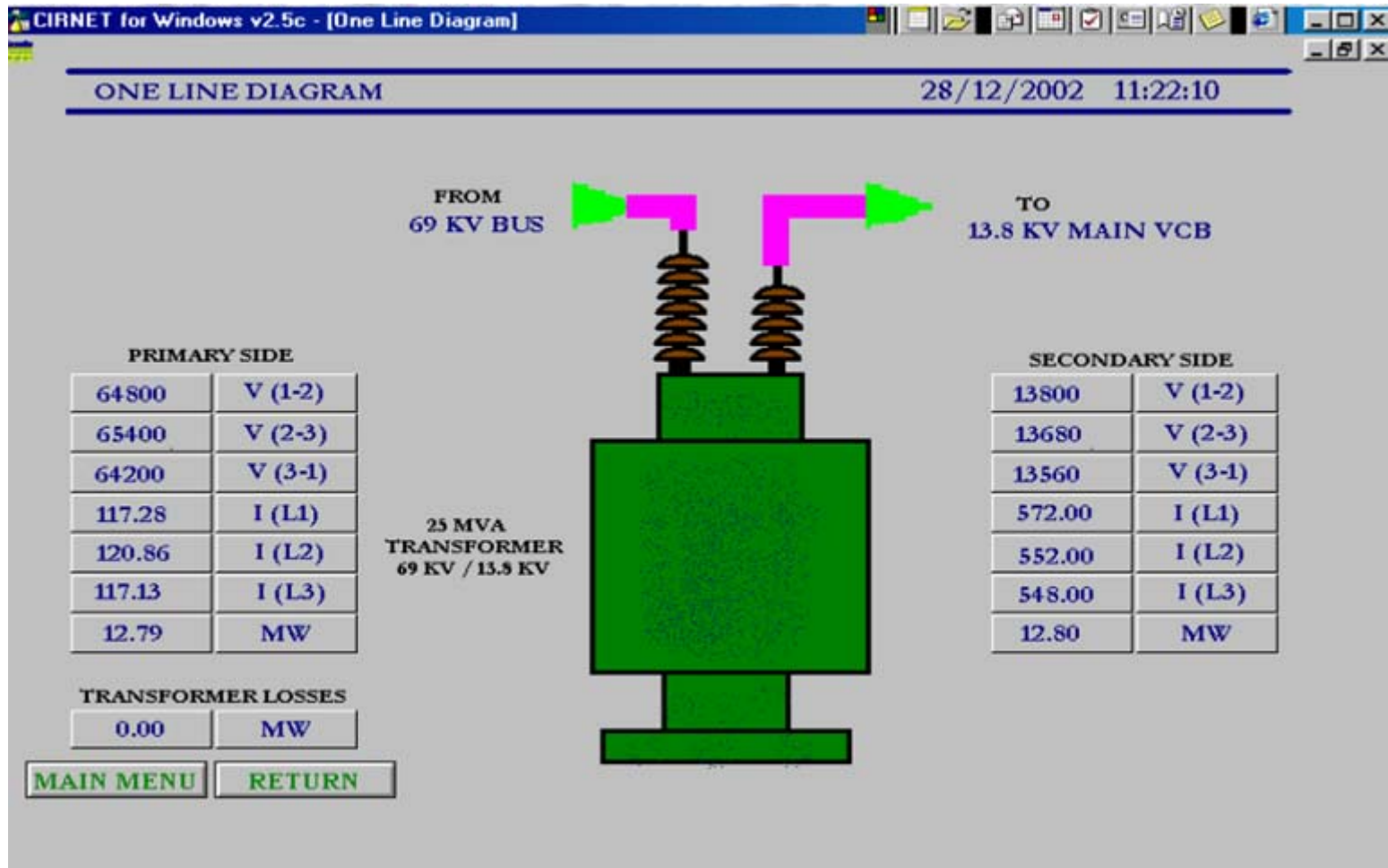
High Voltage Circuit Breaker Overview



Analog Meter Overview



Power Transformer Overview




Circutor CVMk Meter Overview

CIRNET for Windows v2.5c - [One Line Diagram]

ONE LINE DIAGRAM 28/12/2002 11:18:58

13.8 KV MAIN VCB

VCB 13.5 KV



| | |
|-----------|---------|
| 13800 | V (1-2) |
| 13680 | V (2-3) |
| 13560 | V (3-1) |
| 568.00 | I (L1) |
| 551.00 | I (L2) |
| 549.00 | I (L3) |
| 12767.00 | KW |
| 13420.00 | KVA |
| 0.95 | PF |
| 60.00 | FREQ |
| 177833994 | KWH |
| 17327.00 | KW D |
| | |
| | |
| | |

MAIN MENU RETURN

Metered Values – Subfeeder Overview

CIRNET for Windows v2.5c - [Metered Values]

METERED VALUES 27/12/2002 12:40:25

| SWITCHGEAR | KW | I(L1) | I (L2) | I(L3) | PF | |
|---------------|----------|--------|--------|--------|-------|--|
| 13.8 MAIN VCB | 13281.00 | 578.00 | 550.00 | 556.00 | 0.95 | |
| F1 (DAU) | 2801.00 | 120.05 | 123.48 | 121.07 | 0.92 | |
| F2 (PELCO 2) | 3600.00 | 157.65 | 157.63 | 143.51 | 0.94 | |
| F3 (CLARK) | 0.00 | 0.00 | 0.00 | 0.00 | 0.00 | |
| F4 | 0.00 | 0.00 | 0.00 | 0.00 | 0.00 | |
| F5(CLARKVIEW) | 2197.00 | 102.50 | 95.86 | 86.75 | 0.93 | |
| F6(PUREGOLD) | 2276.00 | 101.88 | 74.64 | 109.78 | 0.95 | |
| F7 | 0.00 | 0.00 | 0.00 | 0.00 | 0.00 | |
| F8 | 0.00 | 0.00 | 0.00 | 0.00 | 0.00 | |
| F9 (PORAC) | 896.00 | 40.56 | 39.10 | 32.61 | -0.98 | |
| F10 (V/SOL) | 1515.00 | 61.25 | 64.44 | 66.13 | 0.95 | |
| | | | | | | |
| FEEDER TOTAL | 13285 | | | | | |

MAIN MENU

PREVIOUS

560,502 12:40

Data Logger Overview

Microsoft Excel - Daily Log Sheet

File Edit View Insert Format Tools Data Window Help

SUBS
ANGELE:
Manuel A. Ro

Date: 12/27/02 Log Date: 12/27/02 Start Logging

PRIMARY 69KV FROM P-VILLE

| TIME | FREQ | CURRENT | | | VOLTAGE | | | L1 |
|----------|------|---------|---------|---------|---------|-------|-------|-----|
| | | L1 | L2 | L3 | (1-2) | (2-3) | (3-1) | |
| 6:00 AM | | | | | | | | |
| 7:00 AM | | | | | | | | |
| 8:00 AM | | | | | | | | |
| 9:00 AM | | | | | | | | |
| 10:00 AM | 60 | 115.89 | 117.465 | 114.183 | 64800 | 65400 | 64200 | 566 |
| 11:00 AM | 60 | 116.199 | 118.238 | 114.803 | 64800 | 65400 | 64200 | 567 |
| 12:00 PM | 60 | 119.598 | 122.875 | 118.366 | 65400 | 66000 | 64800 | 579 |
| 1:00 PM | | | | | | | | |
| 2:00 PM | | | | | | | | |
| 3:00 PM | | | | | | | | |
| 4:00 PM | | | | | | | | |

LogSheet1 / LogSheet2

For inquiries, please visit our WEBSITE

www.asiaphil.com

or email us at

write@asiaphil.com