

# ROBIE MVSG

(MERALCO DESIGN) 36 KV MVSG



*36 kV MVSG Meralco Design*



*36 kV MVSG Structural Assembly*



*36 kV MVSG Meralco Design (Complete Package)*

## **Features:**

- Separate compartment for Components, Busbars and Cables.
- Switchboard enclosure is made of steel sheet protected by galvanic coating and powder coating for maximum durability.
- Main busbar system is arranged in the rear of the switchgear in the busbar compartment
- SCADA ready.

## **Benefits:**

- System easily allows the assembly to be configured to suit all technical conditions and plant operational procedures.

## Robie MVSG - MERALCO DESIGN

115kV-34.5kV, Indoor Substation

115kV-34.5kV, Outdoor Substation

15kV MVSG, indoor application

15kV MVSG, outdoor application

## ROBIE MVSG - MERALCO DESIGN

### TECHNICAL SPECIFICATIONS:

Standards: IEC 6227 1-200

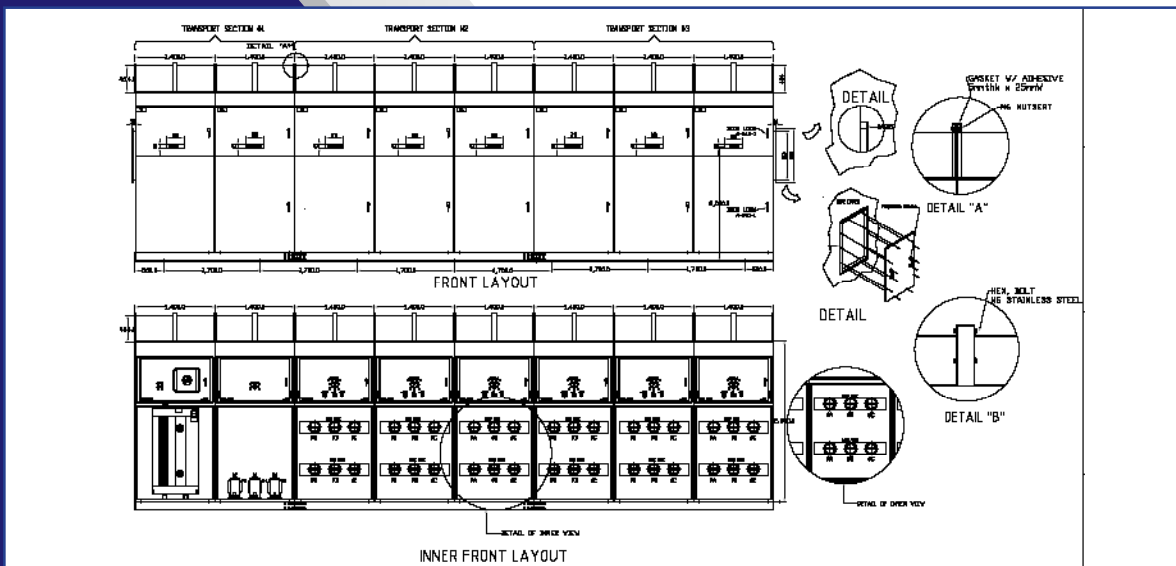
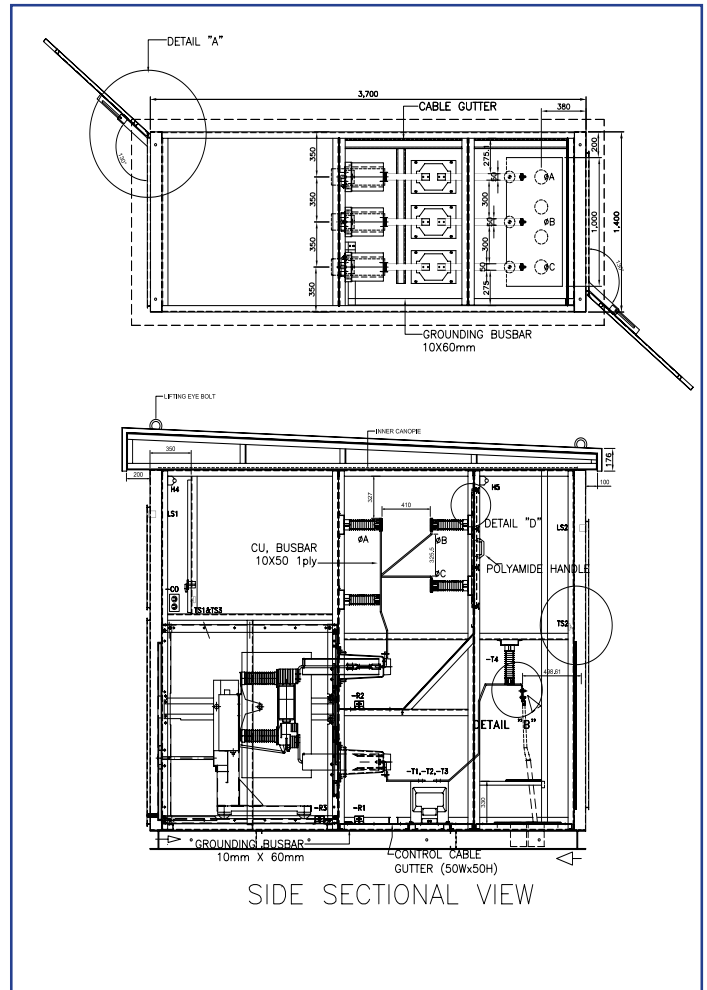
Cubicle type: METAL CLAD-LSC2B-PM

Volatge Rating: 15kV / 34.5kV

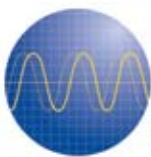
Busbar Current: 1600A

kA Rating: 26kA

Degree of Protection: IP45



Manufactured by:



**ASIAPHIL**  
ASIAPHIL ELECTRIC, INC.

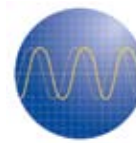
ASIAPHIL ELECTRIC PAMPANGA, INC.

Site Address: Lot 10 & 12 Block 3, Angeles Industrial Park,  
Calibutbut, Bacolor, Pampanga, Philippines

Tele Fax Number: (045) 636-6517-18

ASIAPHIL SOUTH LUZON, INC.

Lot 2582 San Antonio, Sto. Tomas, Batangas  
Telephone No: (043) 318-2854



**ASIAPHIL**  
ASIAPHIL GROUP OF COMPANIES  
FULFILLING POWER NEEDS

[www.asiaphil.com](http://www.asiaphil.com)

[www.giniphil.com](http://www.giniphil.com)

Email us at [write@asiaphil.com](mailto:write@asiaphil.com)