

PANEL BOARD

For AC/DC Applications



Panelboards (6 - 48 ways)



Load Center (6 - 12 branches)



Enclosed Circuit Breaker

Features:

- Switchboard enclosure is made of steel sheet protected by galvanic coating and powder coating for maximum durability.

Benefits:

- System easily allows the assembly to be configured to suit all technical conditions and plant operational procedures.

COMPACT DISTRIBUTION LIGHTING PANEL

LP - - - - -

NO. OF PHASE
 (1) - Single Phase
 (3) - Three Phase

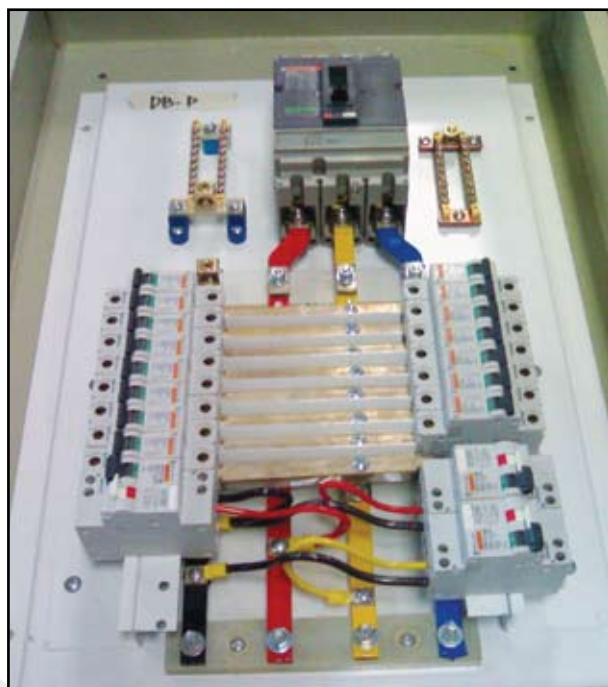
AMPERE FRAME (Main)
 (1) - 100AF
 (2) - 160AF
 (3) - 250AF
 (4) - 400AF

NO. OF 1 POLE BRANCHES
 08
 12
 .
 .
 48

NEUTRAL BUS
 (X) - Without Neutral
 (N) - With Neutral

BRAND
 (SD) - SQUARE D
 (SI) - SIEMENS
 (GE) - GE

No. of 1 Pole Branches	DIMENSION: H=X, W=400mm, D=147.8mm			
	Main			
	100AF	150AF	250AF	400AF
8	600	600	600	600
12	600	715	715	715
16	715	715	715	715
20	715	715	715	715
24	715	830	830	830
28	830	830	830	830
32	830	830	830	830
36	830	900	900	900
40	900	900	900	900
44	900	900	900	900
48	900	1000	1000	1000



SERIES - 4

S4 - - - - -

NO. OF PHASE
 (2) - Single Phase
 (3) - Three Phase

AMPERE FRAME (Main)
 (100) - 100AF
 (250) - 250AF
 (400) - 400AF

NO. OF 1 POLE BRANCHES
 (FOR 1 PHASE) (FOR 3 PHASE)
 08 03
 12 09
 . .
 . .
 48 48

NEUTRAL BUS
 (X) - Without Neutral
 (N) - With Neutral



No. of 1 Pole Branches	DIMENSION: H=X, W=550mm, D=175mm	
	Main	
	100AF, 1 Phase	250AF, 1Phase
8	760	760
12	760	760
16	830	830
20	830	830
24	950	950
28	950	950
32	1050	1050
36	1050	1050
40	1200	1200
42	1200	1200
48	1200	1200

No. of 1 Pole Branches	DIMENSION: H=X, W=550mm, D=175mm		
	Main		
	100AF, 3Phase	250AF, 3Phase	400AF, 3Phase
3	760	760	760
6	760	760	760
9	760	830	830
12	760	830	830
15	830	950	950
18	830	950	950
21	830	1050	1050
24	830	1050	1050
27	950	1200	1200
30	950	1200	1200
33	950	1200	1300
36	950	1200	1300
39	1050	1400	1400
42	1050	1400	1400
45	1050	1600	1600
48	1050	1600	1600

No. of 1 Pole Branches	DIMENSION: H=X, W=748mm, D=229mm	
	Main	
	400AF, 3Phase	630AF, 3Phase
3	760	760
6	760	760
9	830	830
12	830	830
15	950	950
18	950	950
21	1050	1050
24	1050	1050
27	1200	1200
30	1200	1200
33	1200	1300
36	1200	1300
39	1400	1400
42	1400	1400
45	1600	1600
48	1600	1600

Compact Distribution Panel (CDP-32)

